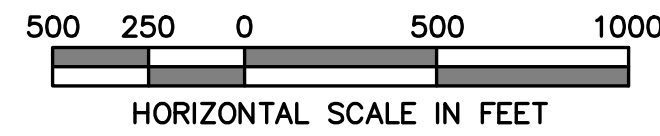


RECORD OF SURVEY

"COUNCIL ROAD RIGHT-OF-WAY"

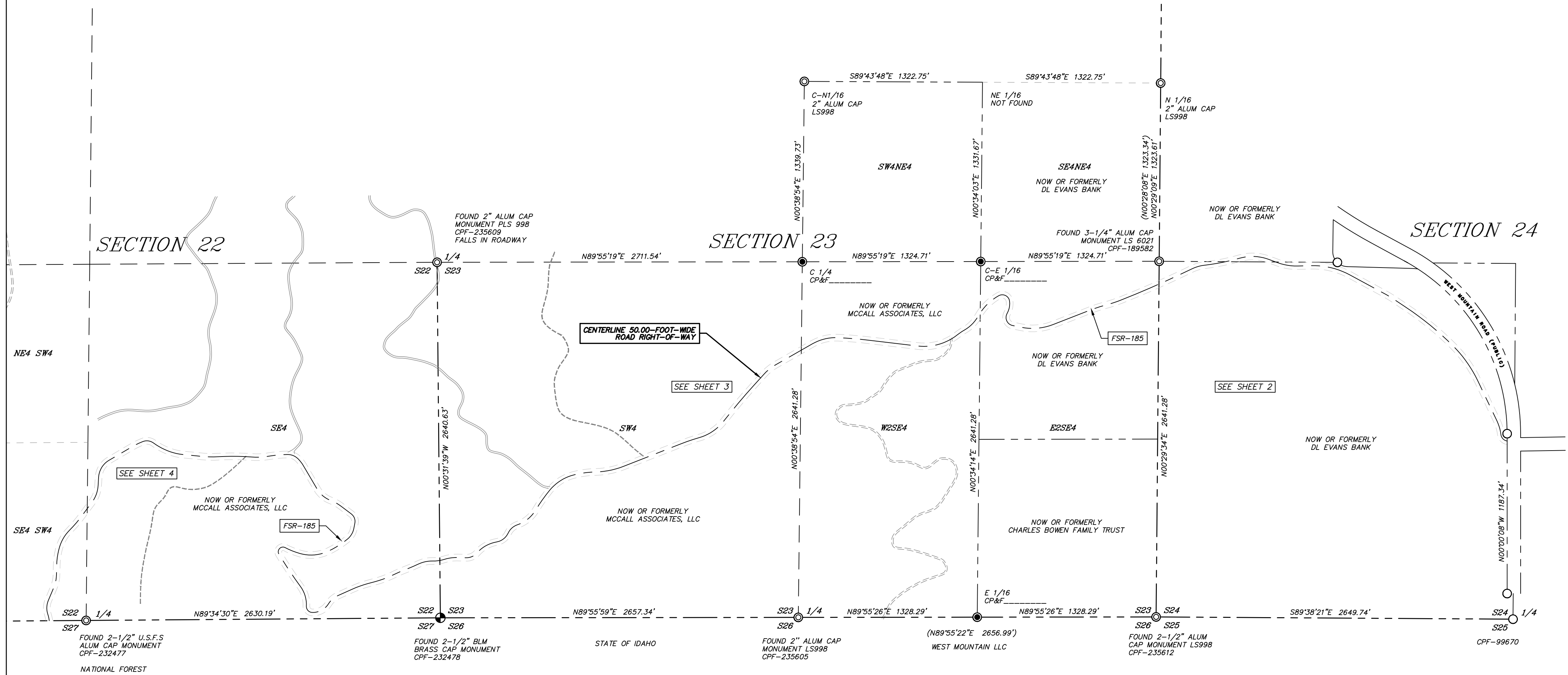
FOR VALLEY COUNTY

LOCATED IN A PORTION OF SECTIONS 22, 23 AND 24
TOWNSHIP 17 NORTH, RANGE 2 EAST, B.M.
VALLEY COUNTY, IDAHO
2024



BASIS OF BEARINGS

BEARINGS ARE BASED ON THE CITY OF MCCALL GRID
(MODIFIED STATE PLANE COORDINATE SYSTEM), DISTANCES
SHOWN ARE TRUE GROUND DISTANCES.



SECTION 27

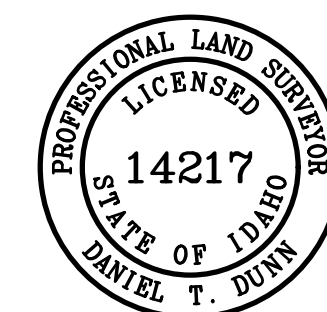
LEGEND

- SECTION LINE
- - - QUARTER SECTION LINE
- - - SIXTEENTH SECTION LINE
- EXISTING PARCEL LINE
- ROADWAY CENTERLINE
- - - EASEMENT LINE
- FOUND BRASS CAP MONUMENT
- ⊙ FOUND ALUMINUM CAP MONUMENT
- FOUND 5/8" REBAR
- ⊙ SET 2-1/2" ALUMINUM CAP MONUMENT ON 5/8"-X24" REBAR, LS14217

SECTION 26

CERTIFICATE OF SURVEYOR

I, DANIEL T. DUNN, DO HEREBY CERTIFY THAT I AM A REGISTERED PROFESSIONAL LAND SURVEYOR, LICENSED BY THE STATE OF IDAHO, AND THAT THIS MAP HAS BEEN PREPARED FROM AN ACTUAL SURVEY MADE ON THE GROUND BY ME OR UNDER MY SUPERVISION, AND THAT THIS MAP IS AN ACCURATE REPRESENTATION OF SAID SURVEY, AND IS IN CONFORMITY WITH THE CURRENT LAWS OF THE STATE OF IDAHO PERTAINING TO PLATS AND SURVEYS.



SHEET 1 OF 4

25 COYOTE TRAIL
CASCADE, ID 83611

PHONE: (208) 634-6896
WWW.DUNNLANDSURVEYS.COM

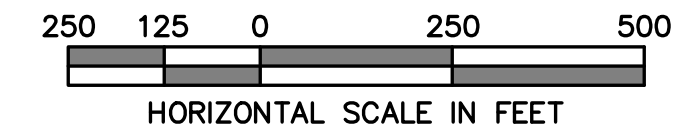


RECORD OF SURVEY

"COUNCIL ROAD RIGHT-OF-WAY"

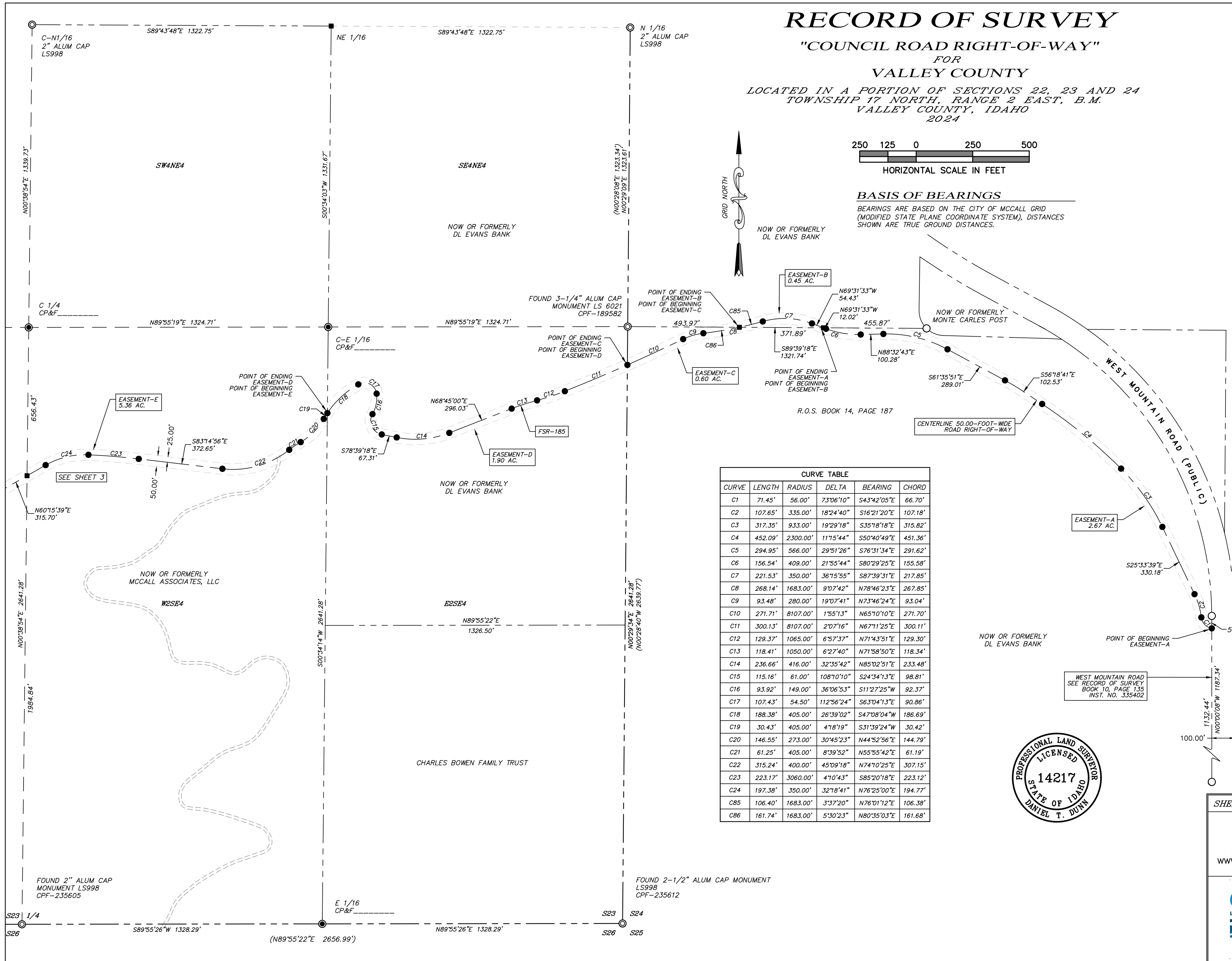
FOR VALLEY COUNTY

LOCATED IN A PORTION OF SECTIONS 22, 23 AND 24
TOWNSHIP 17 NORTH, RANGE 2 EAST, B.M.
VALLEY COUNTY, IDAHO
2024

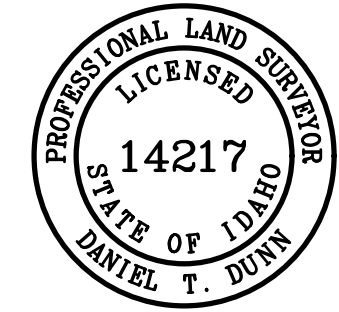


BASIS OF BEARINGS

BEARINGS ARE BASED ON THE CITY OF MCCALL GRID
(MODIFIED STATE PLANE COORDINATE SYSTEM), DISTANCES
SHOWN ARE TRUE GROUND DISTANCES.



CURVE	LENGTH	RADIUS	DELTA	BEARING	CHORD
C1	71.45'	56.00'	73°06'10"	S43°42'05"E	66.70'
C2	107.65'	335.00'	18°24'40"	S16°21'20"E	107.18'
C3	317.35'	933.00'	19°29'18"	S35°18'18"E	315.82'
C4	452.09'	2300.00'	11°15'44"	S50°40'49"E	451.36'
C5	294.95'	566.00'	29°51'26"	S76°31'34"E	291.62'
C6	156.54'	409.00'	21°55'44"	S80°29'25"E	155.58'
C7	221.53'	350.00'	36°15'55"	S87°39'31"E	217.85'
C8	268.14'	1683.00'	9°07'42"	N78°46'23"E	267.85'
C9	93.48'	280.00'	19°07'41"	N73°46'24"E	93.04'
C10	271.71'	8107.00'	1°55'13"	N65°10'10"E	271.70'
C11	300.13'	8107.00'	2°07'16"	N67°11'25"E	300.11'
C12	129.37'	1065.00'	6°57'37"	N71°43'51"E	129.30'
C13	118.41'	1050.00'	6°27'40"	N71°58'50"E	118.34'
C14	236.66'	416.00'	32°35'42"	N85°02'51"E	233.48'
C15	115.16'	61.00'	108°10'10"	S24°34'13"E	98.81'
C16	93.92'	149.00'	36°06'53"	S11°27'25"W	92.37'
C17	107.43'	54.50'	112°56'24"	S63°04'13"E	90.86'
C18	188.38'	405.00'	26°39'02"	S47°08'04"W	186.69'
C19	30.43'	405.00'	4°18'19"	S31°39'24"W	30.42'
C20	146.55'	273.00'	30°45'23"	N44°52'56"E	144.79'
C21	61.25'	405.00'	8°39'52"	N55°55'42"E	61.19'
C22	315.24'	400.00'	45°09'18"	N74°10'25"E	307.15'
C23	223.17'	3060.00'	4°10'43"	S85°20'18"E	223.12'
C24	197.38'	350.00'	32°18'41"	N76°25'00"E	194.77'
C85	106.40'	1683.00'	3°37'20"	N76°01'12"E	106.38'
C86	161.74'	1683.00'	5°30'23"	N80°35'03"E	161.68'



SHEET 2 OF 4

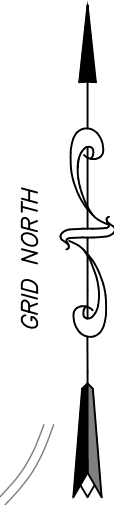
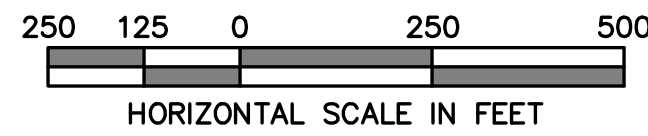
25 COYOTE TRAIL
CASCADE, ID 83611

PHONE: (208) 634-6896
WWW.DUNNLANDSURVEYS.COM

RECORD OF SURVEY

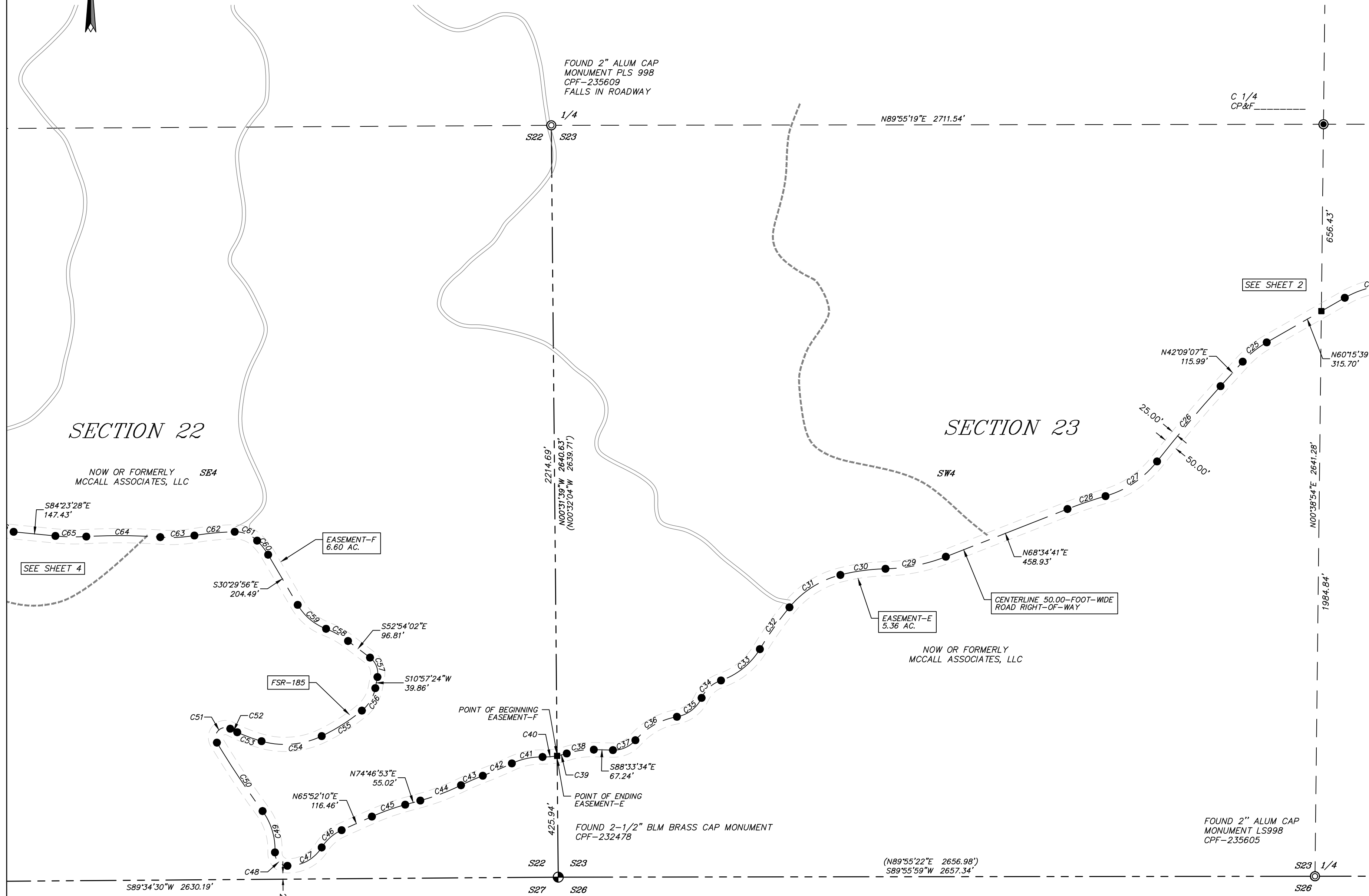
"COUNCIL ROAD RIGHT-OF-WAY" FOR VALLEY COUNTY

LOCATED IN A PORTION OF SECTIONS 22, 23 AND 24
TOWNSHIP 17 NORTH, RANGE 2 EAST, B.M.
VALLEY COUNTY, IDAHO
2024

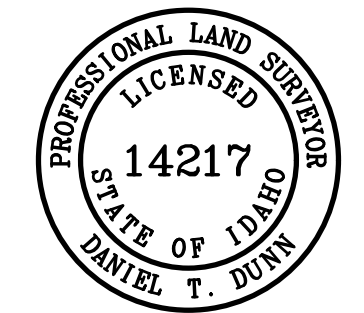


BASIS OF BEARINGS

BEARINGS ARE BASED ON THE CITY OF MCCALL GRID
(MODIFIED STATE PLANE COORDINATE SYSTEM), DISTANCES
SHOWN ARE TRUE GROUND DISTANCES.



CURVE TABLE					
CURVE	LENGTH	RADIUS	DELTA	BEARING	CHORD
C23	223.17'	3060.00'	4°10'43"	S85°20'18"E	223.12'
C24	197.38'	350.00'	32°18'41"	N76°25'00"E	194.77'
C25	108.73'	344.00'	18°06'33"	N51°12'23"E	108.27'
C26	345.87'	4900.00'	4°02'39"	N40°07'47"E	345.80'
C27	221.73'	354.00'	35°53'17"	N56°03'05"E	218.13'
C28	141.07'	1492.00'	5°25'03"	N71°17'12"E	141.02'
C29	217.24'	615.00'	20°14'19"	N78°41'50"E	216.11'
C30	160.34'	700.00'	13°07'27"	N82°15'16"E	159.99'
C31	215.40'	340.00'	36°17'56"	N57°32'34"E	211.82'
C32	180.07'	1246.00'	8°16'50"	N35°15'11"E	179.92'
C33	178.91'	256.00'	40°02'34"	N51°08'03"E	175.29'
C34	94.22'	117.00'	46°08'18"	N48°05'12"E	91.69'
C35	113.47'	118.00'	55°05'46"	N52°33'56"E	109.15'
C36	170.78'	250.00'	39°08'26"	N60°32'36"E	167.48'
C37	88.96'	101.00'	50°28'03"	N66°12'25"E	86.12'
C38	96.40'	289.00'	19°06'46"	N81°53'03"E	95.96'
C39	34.77'	260.00'	7°39'47"	N76°09'34"E	34.75'
C40	51.42'	260.00'	11°19'50"	N85°39'22"E	51.33'
C41	111.08'	241.00'	26°24'30"	N78°07'03"E	110.10'
C42	110.92'	1500.00'	4°14'13"	N67°01'54"E	110.90'
C43	83.48'	900.00'	5°18'51"	N66°29'35"E	83.45'
C44	152.83'	800.00'	10°56'44"	N69°18'31"E	152.60'
C45	124.43'	800.00'	8°54'43"	N70°19'32"E	124.31'
C46	94.06'	160.00'	33°41'00"	N49°01'40"E	92.71'
C47	142.81'	138.00'	59°17'32"	N61°49'56"E	136.52'
C48	71.71'	45.00'	91°18'30"	S42°52'03"E	64.36'
C49	154.47'	227.00'	38°59'22"	S16°42'28"E	151.51'
C50	289.03'	3280.00'	5°02'56"	S33°40'41"E	288.93'
C51	91.66'	35.00'	150°03'23"	S43°52'28"W	67.62'
C52	27.37'	360.00'	4°21'20"	N63°16'31"W	27.36'
C53	91.16'	600.00'	8°42'18"	N69°48'20"W	91.07'
C54	216.64'	300.00'	41°22'31"	S85°09'16"W	211.96'
C55	167.41'	700.00'	13°42'08"	S57°36'56"W	167.01'
C56	93.80'	135.00'	39°48'28"	S30°51'38"W	91.92'
C57	76.90'	69.00'	63°51'25"	S20°58'19"E	72.98'
C58	88.54'	313.00'	16°12'27"	S61°00'15"E	88.24'
C59	132.75'	197.00'	38°36'33"	S49°48'12"E	130.25'
C60	63.06'	235.00'	15°22'32"	S38°11'12"E	62.87'
C61	86.83'	110.00'	45°13'40"	S68°29'18"E	84.59'
C62	142.17'	967.00'	8°25'26"	N84°41'09"E	142.04'
C63	120.32'	503.00'	13°42'20"	N87°19'36"E	120.03'
C64	259.89'	1995.00'	7°27'50"	S89°33'09"E	259.71'
C65	108.65'	700.00'	8°53'36"	S88°50'16"E	108.54'
C66	92.84'	400.00'	13°17'54"	S77°44'31"E	92.63'
C67	143.83'	478.00'	17°14'27"	S62°28'21"E	143.29'



SHEET 3 OF 4
25 COYOTE TRAIL
CASCADE, ID 83611
PHONE: (208) 634-6896
WWW.DUNNLANDSURVEYS.COM

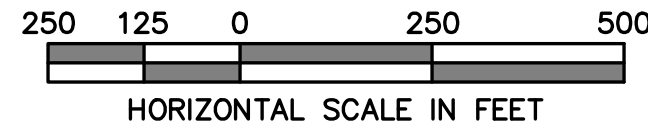


STATE OF IDAHO

RECORD OF SURVEY

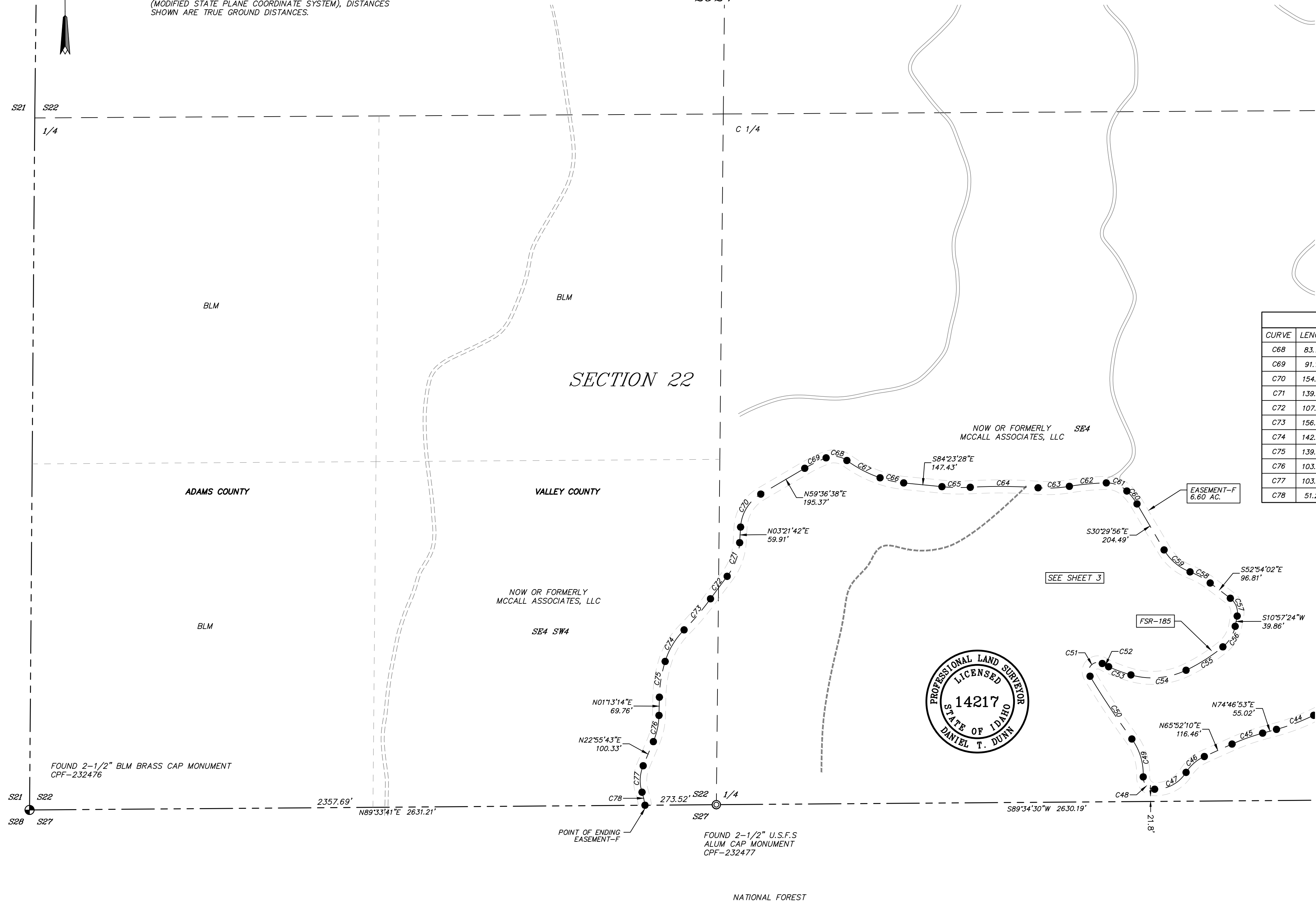
"COUNCIL ROAD RIGHT-OF-WAY"
FOR
VALLEY COUNTY

LOCATED IN A PORTION OF SECTIONS 22, 23 AND 24
TOWNSHIP 17 NORTH, RANGE 2 EAST, B.M.
VALLEY COUNTY, IDAHO
2024

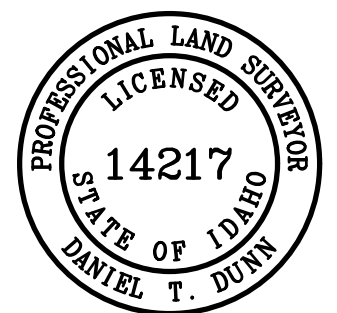


BASIS OF BEARINGS

BEARINGS ARE BASED ON THE CITY OF MCCALL GRID
(MODIFIED STATE PLANE COORDINATE SYSTEM), DISTANCES
SHOWN ARE TRUE GROUND DISTANCES.



CURVE TABLE					
CURVE	LENGTH	RADIUS	DELTA	BEARING	CHORD
C68	83.78'	83.00'	57°50'05"	S82°46'10"E	80.27'
C69	91.14'	600.00'	8°42'10"	N63°57'43"E	91.05'
C70	154.13'	157.00'	56°14'56"	N31°29'10"E	148.02'
C71	139.54'	235.00'	34°01'18"	N20°22'21"E	137.50'
C72	107.17'	4000.00'	1°32'06"	N36°36'56"E	107.17'
C73	156.37'	1000.00'	8°57'33"	N40°19'40"E	156.21'
C74	142.35'	295.00'	27°38'54"	N30°59'00"E	140.98'
C75	139.09'	500.00'	15°56'19"	N09°11'23"E	138.64'
C76	103.43'	273.00'	21°42'29"	N12°04'28"E	102.82'
C77	103.54'	145.00'	40°54'48"	N02°28'19"E	101.35'
C78	51.20'	279.00'	10°30'55"	N12°43'38"W	51.13'



SHEET 4 OF 4

25 COYOTE TRAIL
CASCADE, ID 83611

PHONE: (208) 634-6896
WWW.DUNNLANDSURVEYS.COM