

**APPENDIX A:  
County Wildfire Protection Plan  
2011  
Valley County Fire Working Group**

**County Working Group Membership**

Chairman

Juan Bonilla, Chief, Donnelly Rural Fire Protection District

Membership

John Lillehaug, IDL, Retired

Captain John Coombs, Valley County Disaster Services Coordinator

Gary Brown, PNF

Dusty Pence, BNF

Mark Woods, SITPA

Ken Postma, Cabin Creek Enterprises, Valley County

Stephanie Johnson, Cabin Creek Enterprises, Valley County

Gary Phillips, USFS, PNF

Warren Sedlacek, BOR

Mark Loseke, USFS, BNF

Brandon Swain, McCall Fire Department

Frank Yates, DRFPD, LEPC

Jim Hass, Cascade Rural, Cascade City Fire Department

Randy Skelton, PNF

Gary Murphy, PNF

Dave Vining, PNF

Patrick Morgan, BNF

Tamara Cook, USFS, BNF

Wendy Green, West Central Highlands RC&D

Dave McClintock, Yellow Pine Fire Department

LaDawn Saxton, USFS, PNF

Gary Murphy, USFS, PNF

Mike Theisen, USFS, BNF

Chris Clark, Idaho Department of Lands

Jess Ellis, DRFPD

Kim Drake, BNF

Dave McClintock, YPPD

Garrett d Jong, MFD

Tom Bates, PNF

Jasen King, SITPA

Statewide Representation

David Jackson, Bureau of Homeland Security

Steve Hollenhorst, UofI McCall Field Campus

Dick Bahr, National Parks

TBD - Idaho Firewise

Rich Caldwell, Idaho Firewise, Education

Harry Steele, Idaho Firewise

Kurt Naccarato, Fuels Program Manager

Craig Glazier, Idaho Coordinator, National Fire Plan

Valley County Board of County Commissioners

Gordon Cruickshank, Chairman

Jerry Winkle, Commissioner

Ray Moore, Commissioner

Archie Banbury, County Clerk

VCFWG Chart of Progress

CWPP signed in 2004

Wildland Sub-Committee of LEPC  
2007 Re-charter by BOCC, John Lillehaug,  
Chair

Committee System	Accomplishments	General Committee	Legislative	Lands	Education	Response
Legislative, Lands, Education, Response		Multi-Agency Network	Fire Mitigation Plan	HFT Project Identification	Firewise Garden	Pre-Season Assessment
2010 Chief Juan Bonilla, Chair		Biomass Waste Program		Geographic Area Risk Assessment	Public Outreach	Post-Season Recap
Representation		CFP/IDL HFT Project Review		Subdivision Risk Assessment	County Fair	Pre-Season Training
Members - #of ppl.		Valley County Represents Idaho at Western States Fire Managers Yearly CWPP Update			DRFPD Volunteer Fundraiser	Communications
Agencies - Stakeholders						Resource List
BOCC Orientation						
Grant Funding	Current Projects	WUI Structure Risk Assessment	Home Ignition Zone	Fire Behavior Modeling	Common Msg	Mutual Aid
HFT		Committee Leadership and Membership Assessment		HFT Projects	Website Page on County Site	Update Districts
Firewise				County	Retail Outreach	Creating USFS Agreement
ASPAR Equipt				IDL		
SRS Title III				PNF		
				BNF		
				BOR		
	Plans & Goals	CWPP Updates	Recruit Non-Agency Members	Identify USFS HFT Projects Adjacent to Private Ownership	Recruit Non-Agency Membership YMCA Weekly Paper Article	

**The Fire Working Group is comprised of its general membership and four sub-committees for action items. The committees are currently active with the following tasks and commitments.**

**Sub-Committees**

**Lands**

**Gary Phillips, USFS, PNF, Chairman**

A list of current members:

- Juan Bonilla, Donnelly, Donnelly Fire Department
- Gary Phillips, McCall, Payette NF - Chair person (2004 to present)
- Stephanie Johnson, Cascade, Cabin Creek Enterprises (director)
- Ken Postma, Cascade, Cabin Creek Enterprises
- Chris Clark, McCall, IDL
- Warren Sedlacek, Cascade, BOR
- Dusty Pence, Boise, Boise NF
- Mark Loseke, Cascade RD, Boise NF

Dick Bahr, National Park Service (YMCA Camp Rep)  
Tamara Cook, Emmett, Boise NF  
Mark Woods, McCall, SITPA

Accomplishments:

Annually we've identified and prioritized opportunities for hazard reduction work across jurisdictional boundaries. Based on this coordination we've been able to provide useful information to prepare effective grant proposals and make good use of our fuels dollars, implementing effective work on the ground, tying projects together across jurisdictional boundaries.

Following the development of the original Valley County Fire Mitigation Plan, our committee has worked annually to identify those areas most at risk from fire in the county and make those areas known via the annual addendums to the plan.

As a committee we're building a template using fire behavior modeling and GIS tools to update the risk analysis for the county as it has changed from the original assessment in 2004. Other entities have expressed interest in this concept and our template.

The group was also instrumental in assisting the county in developing the ordinance requiring developers to prepare and present a fire mitigation plan prior to approval for development of a subdivision in Valley County.

Currently Projects:

As a committee we intend to complete the new risk assessment.

Future Focus:

As a committee we will continue to serve the Valley County Commissioners as directed.

We will continue to annually identify and prioritize projects for effective hazard reduction opportunities, update the county's risk assessment and provide input for the annual addendum to the Valley County Fire Mitigation Plan.

**Legislative**

**John Lillehaug, IDL, Retired, Chairman**

A list of current members:

Juan Bonilla, Donnelly, Donnelly Fire Department  
Stephanie Johnson, Cascade, Cabin Creek Enterprises  
Ken Postma, Cascade, Cabin Creek Enterprises  
Mark Woods, McCall, SITPA  
Cynda Herrick (Co. P&X Liaison)

Accomplishments:

One Fire Mitigation Plan was submitted to the County Planning and Zoning Board and was accepted. Highland Woods submitted a 3 year action plan as required to obtain an extension on the proposed development. Currently the mitigation work is ongoing.

Goals for the upcoming year by the committee include researching whether the building code for installing fire resistant building materials such as roofing and siding needs to be updated and that this is the right time. Continued emphasis on locating sites throughout the County where woody material generated from WUI mitigation work done by homeowners can be accumulated. Efforts by the DRFPD were successful in convincing the County to open the dump area for at least one month this summer to allow free dumping of woody material. Additionally membership could be expanded to include representatives from the County Building Departments, City Planning Departments, each of the Fire Response Districts, Realtors, Developers, and Homeowners' Associations.

Research other Counties with Building material legislation.

**Education**

**Mike Theisen, USFS, BNF, Chairman**

A list of current members:

Juan Bonilla, Donnelly, Donnelly Fire Department  
Stephanie Johnson, Cascade, Cabin Creek Enterprises  
Alexis Martin, PNF  
Ann Nicholson, PNF  
Jess Ellis, DRFPD

Jasen King, SITPA  
 LaDawn Saxton, PNF  
 Kim Drake, BNF

Five outdoor class sessions were taught at the YMCA Horsetheif camp. Topics covered were campfire safety, fire ecology, firefighting gear and equipment and homeowner responsibilities. The camp has made great efforts to be firewise and those efforts were shown and talked about to the kids who were ages 10-16. Two fire education sessions were done at forest service campgrounds. Topics were the same as above but more emphasis on Smokey bear. The Valley County Fair booth was set up for 4 days and had firewise pamphlets and over 400 visitors took interest to topics on the table. Firewise materials were provided to local nurseries and we are working with them to develop Firewise workshops in the future.

Firewise Garden – Cascade - Valley County partnered with the Friends of the Cascade Library and the Horizons Education group to install a Firewise Garden at the Cascade Library.

The garden held a soft opening September 12-14, 2011. 30 attended the event held 1-4 each day. Several local homeowners took advantage of the available Firewise materials and asked many great questions. The project was supported by Idaho Firewise and the Bureau of Land Management through their affiliation with the Idaho Botanical Garden. A grand opening to be scheduled in June of 2012, concurrent with the valley planting season.

The group presented information at two public venues, the DRFPD Volunteer Barbecue and the Valley County Fair. A common message for residents is being formulated to represent all agency information. A website with directory information for landowners is in process. Local retail garden, landscaping and contracting businesses are being contacted to assist with bringing this message to the residents of Valley County.

**Response**

**Mark Woods, Southern Idaho Timber Protection Association, Chairman**

**SITPA**

**Equipment**

McCall

<b>Equip #</b>	<b>Type</b>	<b>Description</b>
E8	Type 6	2005 Ford F-350, 4x4, 200 gallon, 50 gpm
E10	Type 6	1997 Ford F-350, 4x4, 300 gallon, 50 gpm
E24	Type 6	2005 Ford F-450, 4x4, 400 gallon, 50 gpm
E3	Type 6	1970 Gamma Gote, 6x6, 200 gallon, 50 gpm
WT 27	Type 2	1975 Jeep, 6x6, 3,000 gallon, 264 gpm
WT 28	Type 2	1981 White, 3500 gallon, 264 gpm
D46	Type 3	1991 John Deere 550G
Trans 40		1990 Kenworth T800 tractor with dozer trailer

Cascade

<b>Equip #</b>	<b>Type</b>	<b>Description</b>
E7	Type 6	2005 Ford F-350, 4x4, 200 gallon, 50 gpm
E9	Type 6	1997 Ford F-350, 4x4, 300 gallon, 50 gpm
E25	Type 6	2005 Ford F-450, 4x4, 400 gallon, 50 gpm
E17	Type 6	1970 Gamma Gote, 6x6, 200 gallon, 50 gpm
WT 26	Type 3	1970 American General, 6x6, 1600 gallon, 138 gpm
D48	Type 3	1994 CAT D4C
Trans 39		1980 Astro, Dozer transport

**IDL**

McCall	Type	Description
	SEAT	AT802F. 800 gallons
	SEAT	AT802F, 800 gallons

### Donnelly Fire Protection District

#### Staffing

Permanent Full Time	9
Volunteers	24

#### Equipment

Equip. Call #:	Type:	Description:
Donnelly		
E-1	Type 2	1997 BME Freightliner 4x4, 1250 gpm w/ foam, 1000gal.
E-2	Type 2	2005 Pierce International, 1000 gpm, 1000 gal.
E-3	Type 6	2006 GMC 5500 4x4, 100 gpm calf w/ foam, 113 gal.
E-4	Type 4	1986 GMC 4x4, 200 gpm w/ foam, 300 gal.
T-1	Type 2	2006 BME Freightliner, 1000 gpm, 3000 gal.
T-2	Type 3	1978 Ford, 200 gpm, 1250 gal.
T-3	Type 2	1958 Reo 6x6, 3000 gal.
R-1	Rescue	2007 BME Ford F-550 4x4
R-2	Rescue	1976 Ford Heavy Rescue
R-3	Rescue	Polaris UTV Ranger 4x4
C-1	Pickup	2008 Ford F-250 4x4
C-2	Pickup	1998 Ford F-150 4x4 w/ foam tote
A-1	Type 1	2007 Ford F-350 4x4 (Ambulance)
A-2	Type 1	1998 Ford F-350 4x4 (Ambulance)
A-3	Type 1	1996 Chev 3500 4x4 (Ambulance)
2	Snowmobiles	2006 Arctic Cat M-8s
2		portable water pumps (200 gpm)

E- Engine, T- Tender, R- Rescue, C- Command, A- Ambulance.

### Cascade

#### Staffing

Permanent Full Time	3
Volunteers	39

#### Resource Needed:

Nomex Brush Jackets (12); Wildland Combi Tool (12); FoldaTank 1500 gal (1) ; and Portable Pump (1)  
 Certified in- house instructor for continuous education  
 Assist with funding for a full time employee for prevention and code enforcement.

### McCall

Secure funding to hire seven more employees that are full-time. This would allow staffing a four-person engine company year round to ensure optimal structural protection and initial firefighting operations in the fire protection district. Purchase another 3000 gallon Water Tender. Purchase a new Type 6 Engine.

### Yellowpine

1. Used SCBA compressor
2. 1000 feet of 1 1/2" hose

3. 1000 feet of 3/4" hose
4. 10-1 1/2" to 3/4" NH tee's
5. 10-3/4" nozzles
6. 10-Fire line sprinklers
7. Honda powered Mark 3 pump
8. 10 Pulaski's
9. 10 Forestry shovels
10. 2 Mcleods
11. 10 nomex shirts
12. 2 dozen heavy leather gloves
13. 1 dozen wildland goggles

\*\* The Valley County Board of County Commissioners does not, through the support of this Appendix, obligate the County to fund or support the district's pursuit of resources.

### **Hazardous Fuels Treatments**

#### **Private Lands**

##### Current Projects

- o 2008 Western States - Paddy Flat – Completed November 2011
- o 2009 Emergency Supplemental Grant – Jughandle – Completed 2011
- o 2009 Western States - Little Donner – in process
- o 2009 Community Fire Protection Grant - Paddy Flat 2 – Completed 2011
- o Kennedy Gold Dust Transfer – Completed 2011
- o 2010 Community Fire Protection Grant - West Lake Cascade – in process
- o 2011 Community Fire Protection Grant - Horsethief

##### Projects on Shelf

- o Smith's Ferry / High Valley

#### **Federal Lands**

##### USFS BNF

- |  |                     |
|--|---------------------|
| 1. Crawford  | completed           |
| 2. Shoreline                                       | completed           |
| 3. Sixshooter                                      | completed           |
| 4. Golden Gate                                     | completed           |
| 5. Westside Restoration Project                    | planned             |
| 6. Horsethief                                      | planned             |
| 7. Crawford East                                   | planned             |
| 8. Scriver   | planned             |
| 9. Rocky Canyon Prescribed Burn – 8032 acres       | planned Spring 2012 |
| 10. Lodge Pole Springs Prescribed Burn- 1500 acres | planned Spring 2012 |

##### USFS PNF

- |                        |             |
|------------------------|-------------|
| 1. Yellow Pine         | in progress |
| 2. Paddy Flat          | completed   |
| 3. Big Creek           | planned     |
| 4. Rocky Bear          | planned     |
| 5. Brundage Bear Basin | in progress |

#### **Bureau of Reclamation**

- |                |             |
|----------------|-------------|
| 1. Dawn Drive  | in progress |
| 2. Crown Point | in progress |

#### **State Lands**

Center Ridge Timber Sale – postponed until markets improve  
 Paddy Cake Timber Sale – sale completed. slash work to be done in 2012

Paddy Flat Timber Sale – sale completed. slash work to be completed in 2012  
Crown Point HFT project – fuel break completed in 2010  
McCall 80 Fuel Reduction – all work completed  
Bo Tye Fuelbreak - completed  
Boulder South TS is in progress (south of Boulder Creek)  
East Jug TS completed. Slash work to be done in 2012  
Beavertail TS almost complete. Slash work to be done in 2012  
Sylvan Wagon TS completed and all slash work done  
Jug Meadows TS completed and all slash work done  
Round Again TS proposed in south Round Valley to be sold in Dec. 2012

## **General Fire Working Group Agenda**

### **Progress achieved 2011 Agenda items**

Encourage the employment of current technology for realizing assessment that is more effective, preventive and responsive. Specifically support the following efforts:

Development of a County-wide Geographic Information System - spatial data is being utilized

Use of County-wide Hazard Assessment Software Applications - the Sheriff's Department is using response software. The fire response districts are well into data collection for a wildfire structure assessment program.

Maintain the Community Wildfire Protection Plan as a living document and in the short term:

Analyze existing geographic areas for current hazard assessment. - a new assessment is completed.

Identify areas outside a current rural fire district and encourage the development of a rural department. - in progress.

Identify, organize and realize County Slash Collection sites located at two sites assessable to north and south county residents. - residents were provided two collection opportunities at the County Collection Site just outside Donnelly. - The response was excellent.

Continue review of Wildland-Urban Interface codes for incorporation into the Fire Plan to protect residents living in the WUI. - the Legislative Committee is reviewing county needs and researching other county legislation.

Educate residents about Wildland-Urban Interface risks. Develop an effective conveyance method for educational information. - a Firewise Garden was funded and installed in Cascade.

Develop memorandum of understanding agreements between federal, state, county and city response districts. - in progress

### **Agenda Items for 2012**

Encourage the employment of current technology for realizing assessment that is more effective, preventive and responsive. Specifically support the following efforts:

Development of a County-wide Geographic Information System - continue support of and provide data to a county-wide system.

Use of County-wide Hazard Assessment Software Applications - monitor current systems in place and research and recommend product utilization throughout the county.

Maintain the Community Wildfire Protection Plan as a living document and in the short term:

Analyze existing geographic areas for current hazard assessment - continuing working on creating and utilizing data layers to fine tune the HAA.

Identify areas outside a current rural fire district and encourage the development of a rural department - continue to educate and invite outlying areas to consider response taxing districts throughout the county.

Improve working relationship with the State Fire Working Group and Homeland Security Bureau - review and encourage representation on a statewide level.

Identify, organize and realize County Slash Collection sites located at two sites assessable to north and south county residents - work with the county to continue offering community opportunities for woody debris disposal throughout the area.

Continue review of Wildland-Urban Interface codes for incorporation into the Fire Plan to protect residents living in the WUI - present a viable plan to the BOCC and subsequently the P&Z for informed consumer building materials to provide a safer structure environment in the WUI.

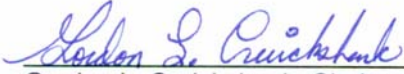
Educate residents about Wildland-Urban Interface risks. Develop an effective conveyance method for educational information.

Develop memorandum of understanding agreements between federal, state, county and city response districts - move forward from current milestones and solidify agreements throughout the fire response community.

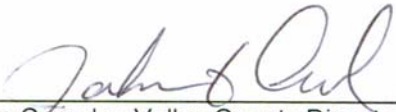
**Document Prepared by:**

Valley County Fire Working Group  
Juan Bonilla, Chairman  
Stephanie Johnson, Facilitator

This document is accepted as a 2011 Appendix to the current Valley County Idaho County Wildland Protection Plan on December 19, 2011.



\_\_\_\_\_  
Gordon L. Cruickshank, Chairman  
Chairman, Valley County Board of Commissioners

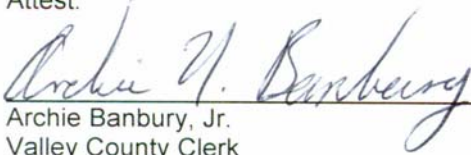


\_\_\_\_\_  
John Coombs, Valley County Disaster Services Coordinator  
Captain, Valley County Sheriff's Department



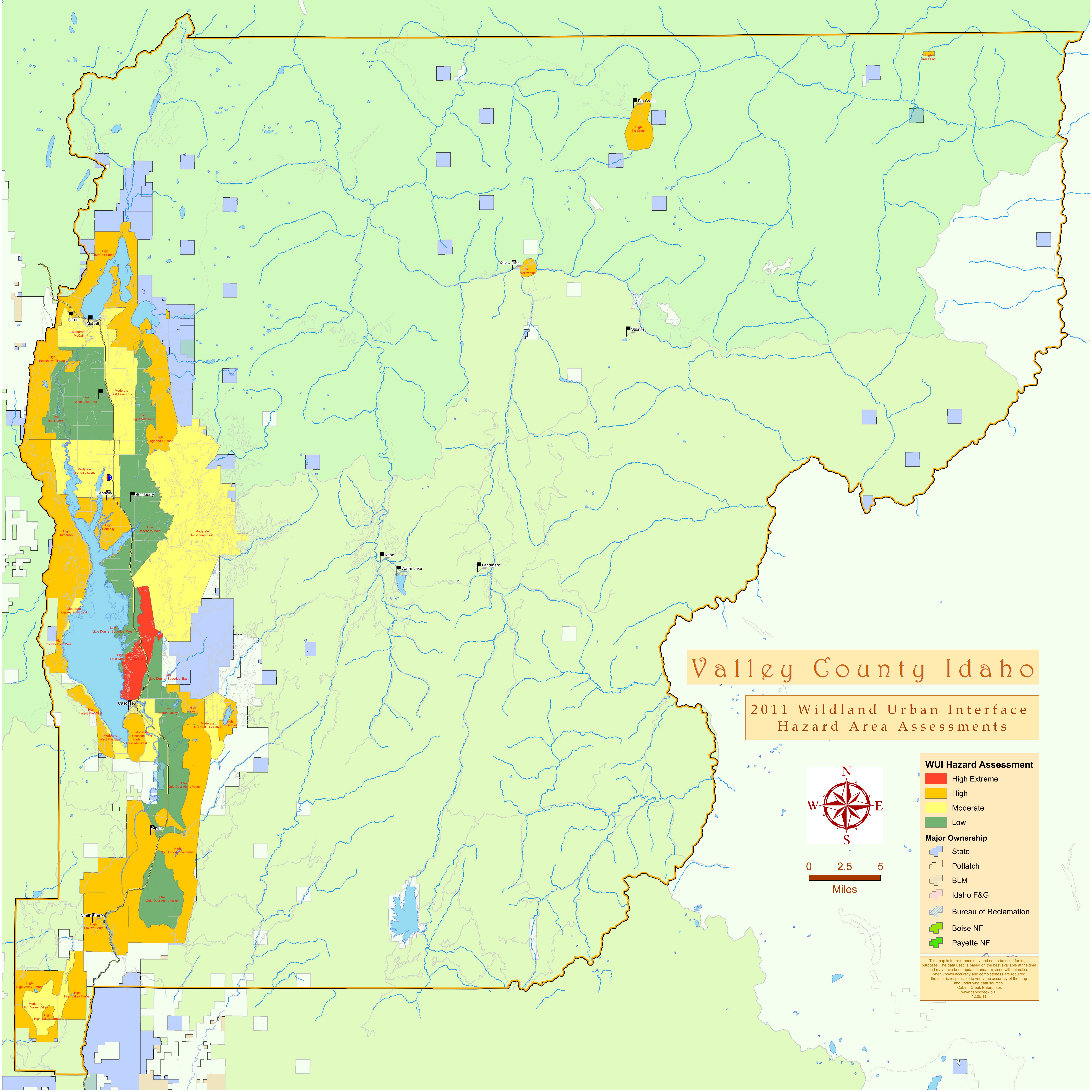
\_\_\_\_\_  
Juan Bonilla, Chairman Valley County Fire Working Group  
Chief, Donnelly Rural Fire Protection District

Attest:



\_\_\_\_\_  
Archie Banbury, Jr.  
Valley County Clerk





# Valley County Idaho

## 2011 Wildland Urban Interface Hazard Area Assessments



### WUI Hazard Assessment

- High Extreme
- High
- Moderate
- Low

### Major Ownership

- State
- Potlatch
- BLM
- Idaho F&G
- Bureau of Reclamation
- Boise NF
- Payette NF

This map is for reference only and not to be used for legal purposes. The data used is based on the best available at the time and may have been updated and/or revised without notice. When known accuracy and completeness are required, the user is responsible to verify the accuracy of the map and underlying data sources.  
 Cabin Creek Enterprises  
 www.cabincreek.biz  
 12.25.11